

# 6659 Locust Street

Falls Church, *Virginia*



**BEACON**  **CREST**  
HOMES

(703) 342-2020 • [BeaconCrestHomes.com](http://BeaconCrestHomes.com)

# Standard Features

## LUXURY FINISHES

---

- HARDWOOD THROUGHOUT MAIN LEVEL, UPPER HALL, & OWNER'S SUITE (HAND-FINISHED ON SITE)
- OAK STAIRS (MAIN STAIRS, HAND-FINISHED ON SITE)
- CARPETED LOWER LEVEL, BEDROOMS 2-4 (LEVEL 2 CARPET)
- 3-PIECE CROWN MOLDING THROUGHOUT FIRST LEVEL, UPPER HALL, & OWNER'S SUITE
- OVERSIZED CRAFTSMAN-STYLE DOOR & WINDOW CASINGS THROUGHOUT
- 7 1/4" BASEBOARDS THROUGHOUT MAIN LEVEL, UPPER HALL, & OWNER'S SUITE
- 5 1/4" BASEBOARDS IN LOWER LEVEL, BEDROOMS #2-4
- SOLID CORE INTERIOR DOORS THROUGHOUT
- FAMILY ROOM GAS FIREPLACE
- CUSTOM MUD ROOM BUILT-IN

## DISTINCTIVE EXTERIORS

---

- 6,000 SQUARE FOOT HOME SITE
- COVERED FRONT PORCH
- HARDIEPLANK SIDING WITH STONE ACCENTS
- 30-YEAR ARCHITECTURAL GRADE ROOF SHINGLES
- FENCED REAR YARD
- HOSE BIBS (FRONT & REAR)
- ELECTRICAL OUTLETS (FRONT & REAR)
- 2-CAR ATTACHED GARAGE

## GOURMET KITCHEN

---

- STAINLESS STEEL KITCHENAID APPLIANCE PACKAGE:
  - 36" COUNTER-DEPTH FRENCH DOOR REFRIGERATOR
  - 30" FIVE-BURNER GAS RANGE WITH STAINLESS STEEL CANOPY HEAD
  - COMBINATION ELECTRIC WALL OVEN / MICROWAVE
- STAINLESS STEEL DISHWASHER WITH CLEAN WATER WASH SYSTEM
- GRANITE COUNTER TOPS (LEVEL 2)
- CUSTOM CABINETS TO CEILING (LEVEL 2)
- LARGE PANTRY
- CERAMIC TILE BACKSPLASH

## OWNER'S BATH

---

- DESIGNER LEVEL MARBLE TILE
- WALK-IN SHOWER WITH BENCH SEATING, AND 3/8" HEAVY GLASS SHOWER DOOR & ENCLOSURE
- SEPARATE FREESTANDING SOAKING TUB
- WOOD VANITY (LEVEL 2)
- DOUBLE BOWL VANITY WITH GRANITE OR MARBLE TOP (LEVEL 2)

## SECONDARY BATHS

---

- SUBWAY TILES WITH DECORATIVE ACCENTS
- HIGH EFFICIENCY 1.28 GALLON FLUSH TOILETS
- WOOD VANITIES (LEVEL 1)
- GRANITE OR MARBLE VANITY TOPS (LEVEL 2)

## ENERGY SAVING FEATURES

---

- ENERGY STAR CERTIFIED HOME
- TANKLESS HOT WATER HEATER
- PLYGEM LOW-E WINDOWS WITH ARGON GAS
- PREMIUM INSULATION & AIR INFILTRATION PACKAGE
- 2X6 EXTERIOR WALLS FOR ADDED INSULATION
- HIGH EFFICIENCY DUAL ZONE HEATING & COOLING EQUIPMENT
- ENERGY EFFICIENT HOUSEWRAP & OSB SUB-SIDING

## ADDITIONAL HOME FEATURES

---

- 9' CEILINGS ON FIRST & SECOND LEVELS
- 9' FOUNDATION WALLS (APPROX. 8'9" FINISHED LOWER LEVEL)
- TECH WIRING PACKAGE THROUGHOUT
- SECURITY SYSTEM WITH 1 YEAR MONITORING AGREEMENT
- FLOWGUARD GOLD CPVC WATER PIPES

## COMMUNITY FEATURES

---

- FAIRFAX COUNTY PUBLIC SCHOOLS
- HAYCOCK ELEMENTARY SCHOOL
- LONGFELLOW MIDDLE SCHOOL
- MCLEAN HIGH SCHOOL
- PUBLIC WATER & SEWER SERVICE

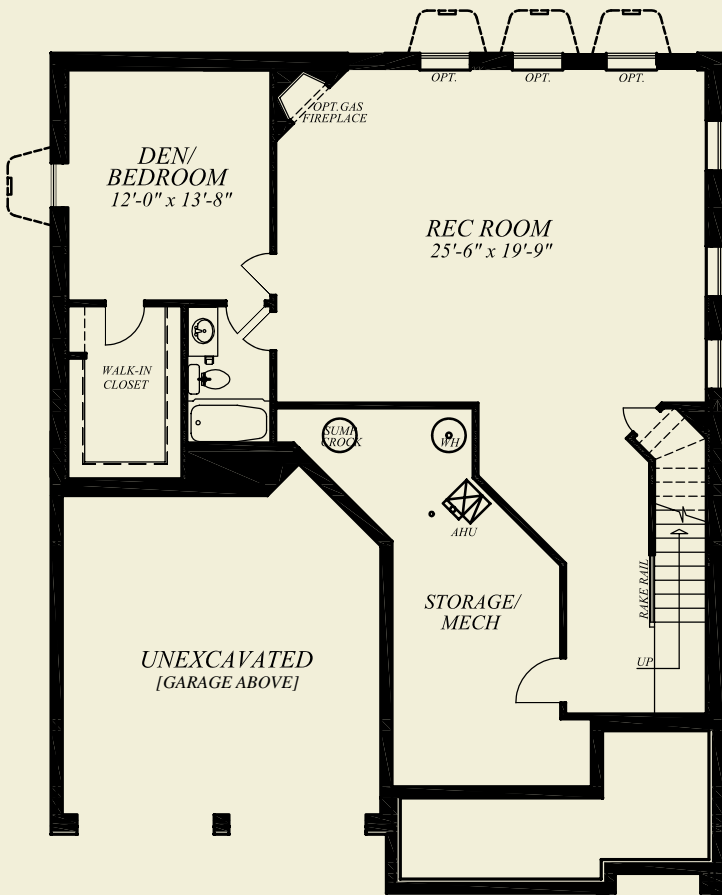
## CUSTOMER SERVICE FEATURES

---

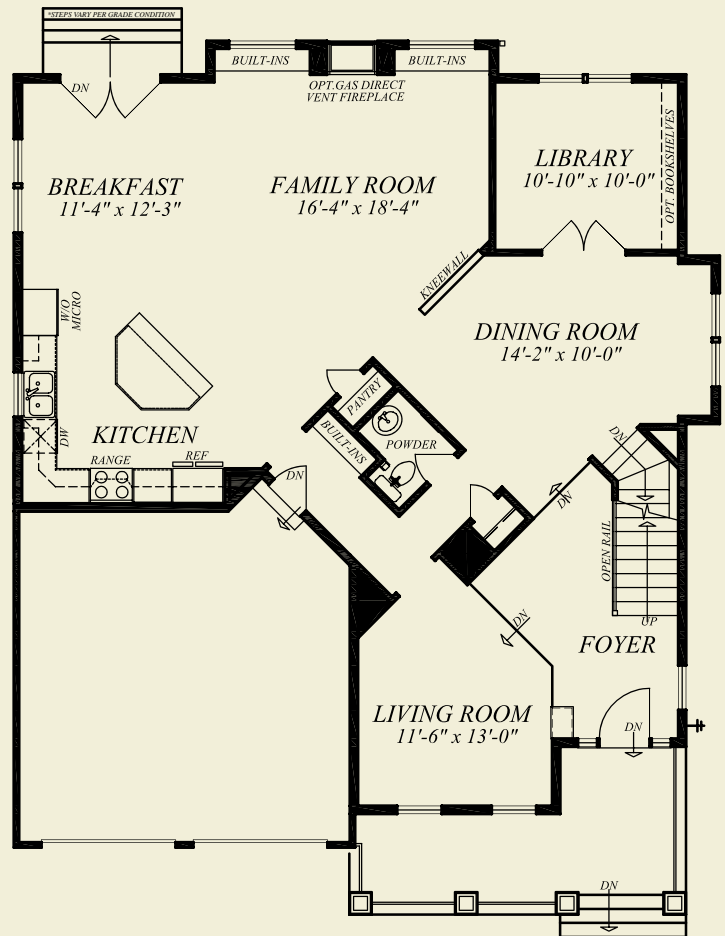
- PRE-SETTLEMENT DEMONSTRATION
- HOME WARRANTY PROVIDED THROUGH QUALITY BUILDERS WARRANTY CORPORATION

# 6659 Locust Street

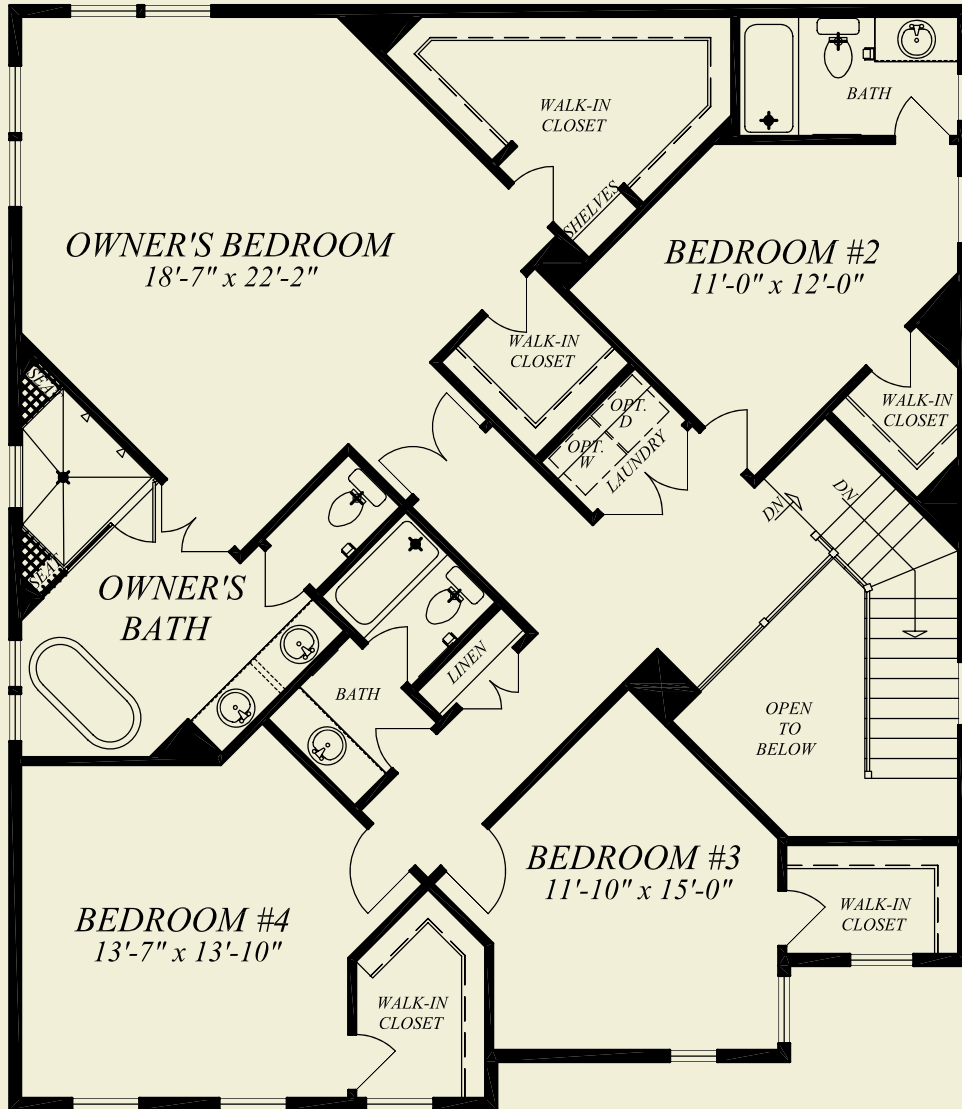
Falls Church, Virginia



Lower Level



First Level



Second Level

**BEACON CREST HOMES**

(703) 342-2020 • [BeaconCrestHomes.com](http://BeaconCrestHomes.com)

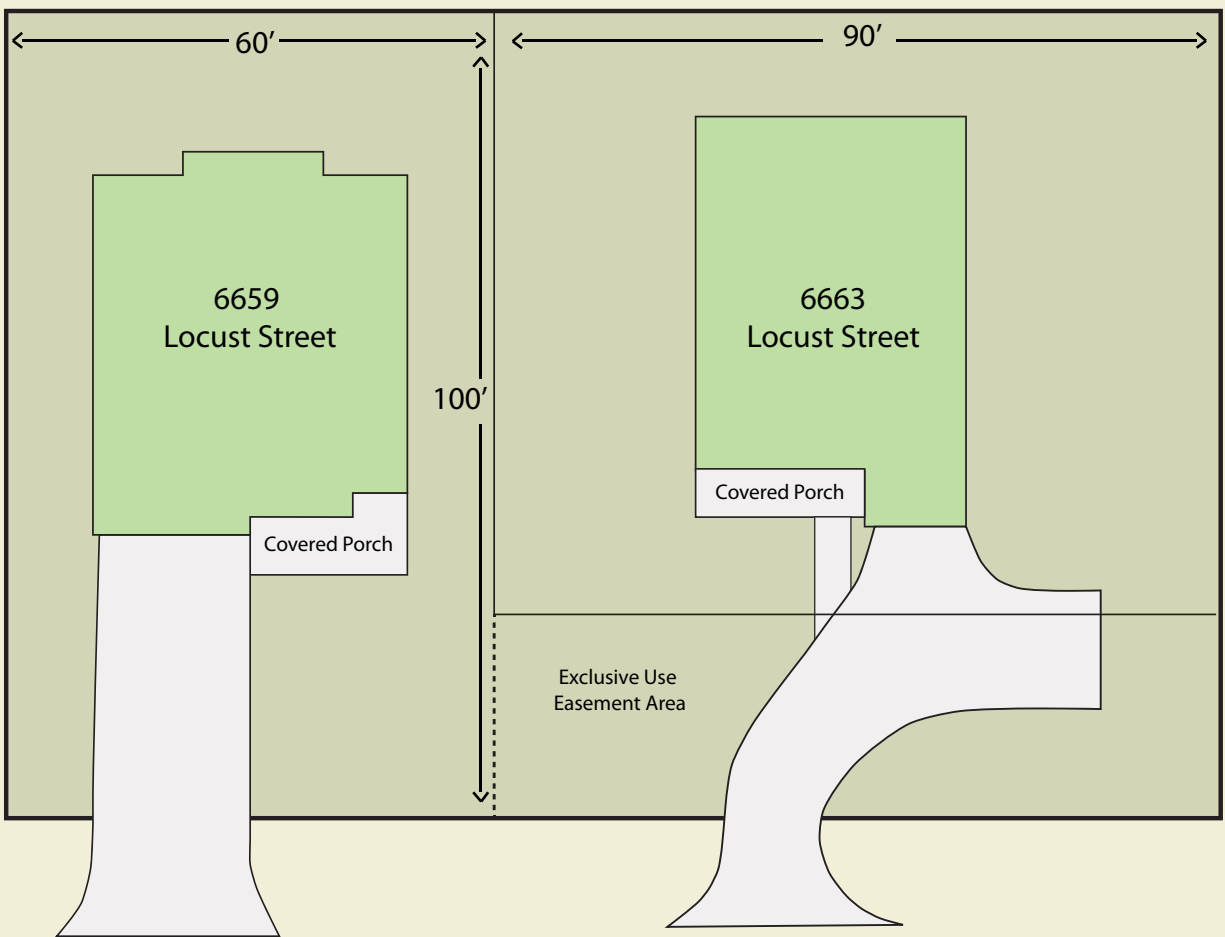


All floorplans and elevations are approximate and subject to change without notice. Room dimensions and window locations may vary with elevation.



# Homesite Layout

6659 Locust Street, Falls Church, Virginia



Locust Street

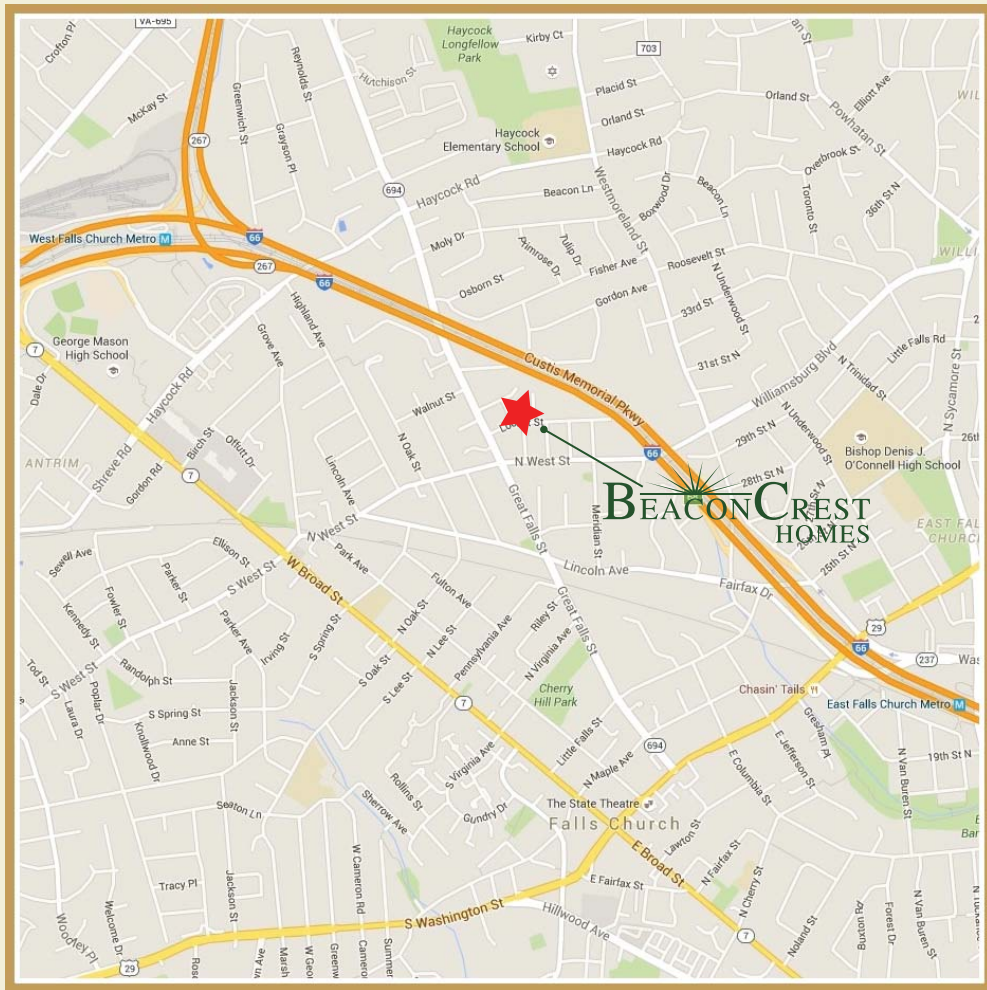
**BEACON** CREST  
HOMES

(703) 342-2020 • BeaconCrestHomes.com



# Area Map

6659 Locust Street, Falls Church, Virginia



**BEACON CREST HOMES**



(703) 342-2020 • [BeaconCrestHomes.com](http://BeaconCrestHomes.com)